

1 EXAMPLE

What are the slope and y-intercept of $y = 2x - 3$?


$$m = 2$$

$$b = -3$$

Find the slope & y-intercept.

#1. $y = -2x + 1$ $m = -2$
 $b = 1$

#3. $y = x - \frac{5}{4}$ $m = 1$
 $b = -\frac{5}{4}$

$y = 3x$ $m = 3$
 $b = 0$

2 EXAMPLE Write an equation of the line with slope $\frac{2}{5}$ and y-intercept 4.

$$y = mx + b$$

$$y = \frac{2}{5}x + 4$$

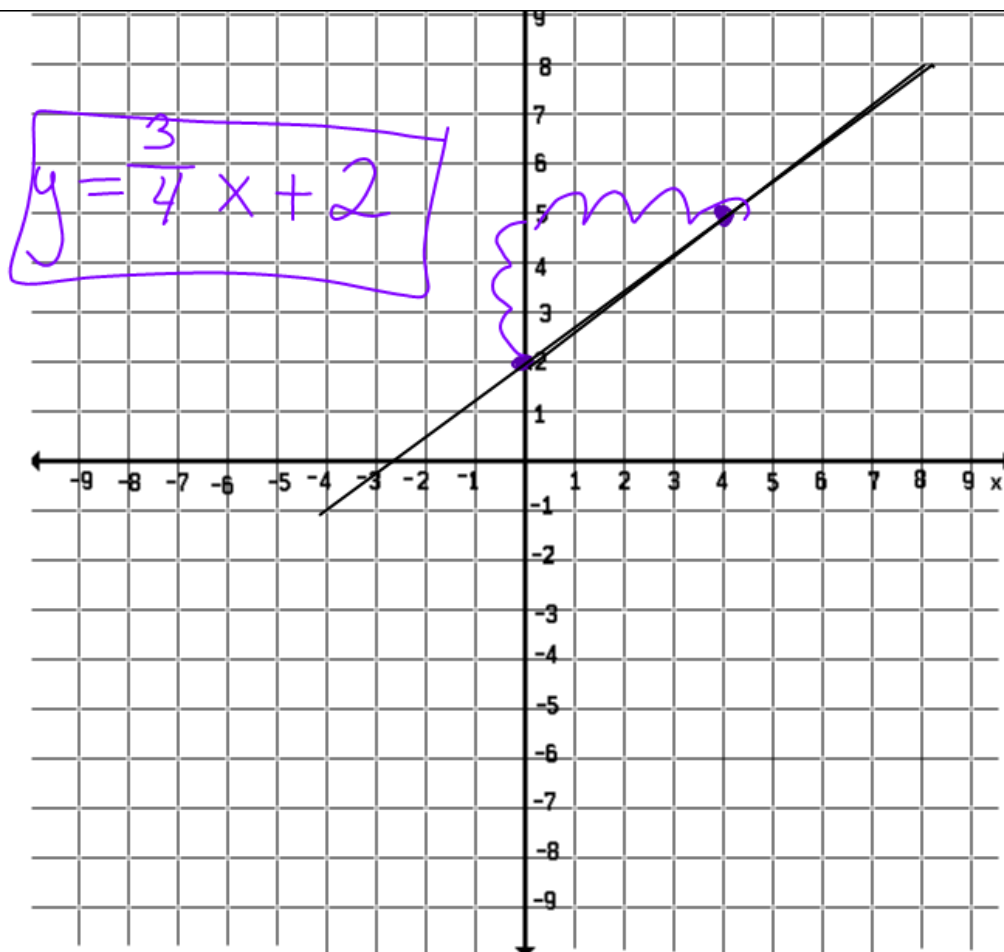
Write an equation in slope-intercept form of a line with the following slope & y-intercept.

#11. $m = 3$ $b = \frac{2}{9}$

$$y = 3x + \frac{2}{9}$$

#15. $m = -\frac{2}{3}$ $b = 5$

$$y = -\frac{2}{3}x + 5$$



Write an
equation
in slope-intercept.

A²

© 2005, Agnes Azzolino

Permission is granted to duplicate as needed for nonprofit purposes.

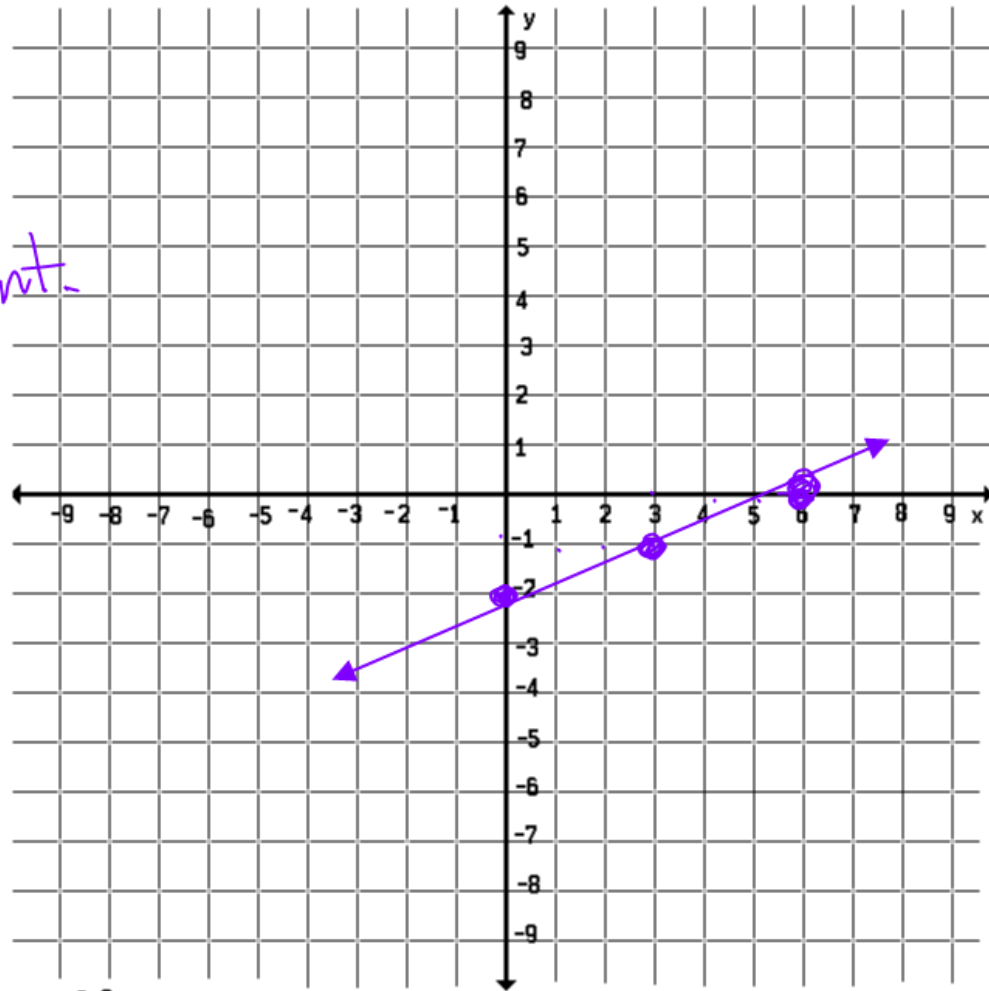
www.mathnstuff.com/gif/9x9not.gif

4 EXAMPLE

Graph $y = \frac{1}{3}x - 2$.

↑ Slope
↑ y-int.

$\frac{1}{3}$ rise
run

 A^2

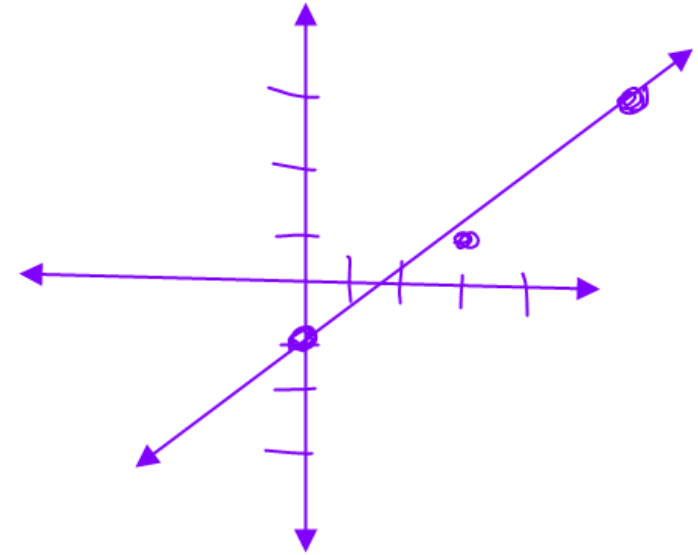
© 2005, Agnes Azzolino

www.mathnstuff.com/gif/9x9not.gif

Permission is granted to duplicate as needed for nonprofit purposes.

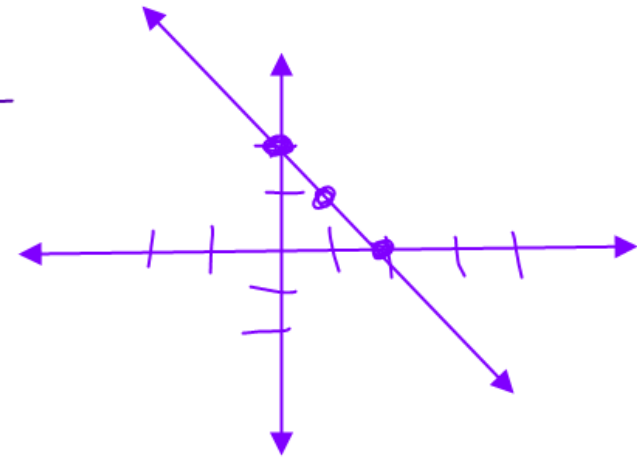
Graph.

29. $y = \frac{2}{3}x - 1$



33. $y = -x + 2$

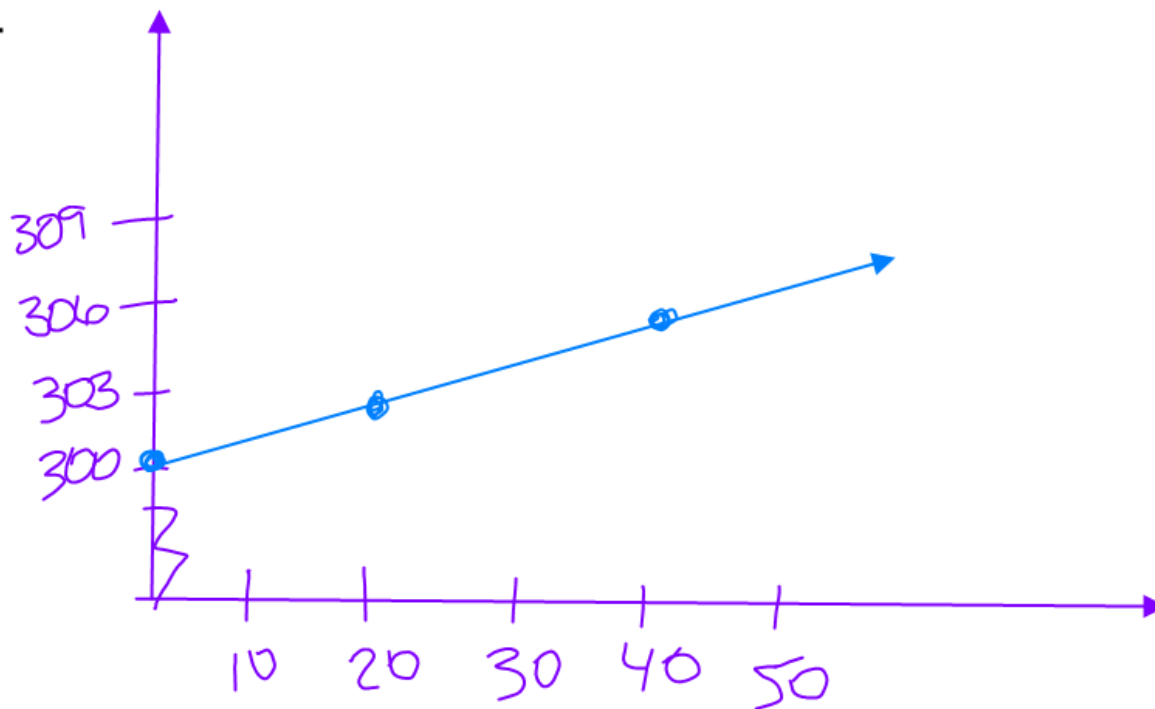
$\frac{-1 \text{ rise}}{1 \text{ run}}$



5 EXAMPLE The base pay for a used car salesperson is \$300 per week. The salesperson also earns 15% commission on sales made. The equation $t = 300 + 0.15s$ relates total earnings t to sales s . Graph the equations.

$$\frac{15}{100} \div 5$$

$$\frac{3 \text{ rise}}{20 \text{ run}}$$



Homework: pg. 320 #4, 6, 12, 18, 22, 26, 32, 38, 40, 62, 84, 88