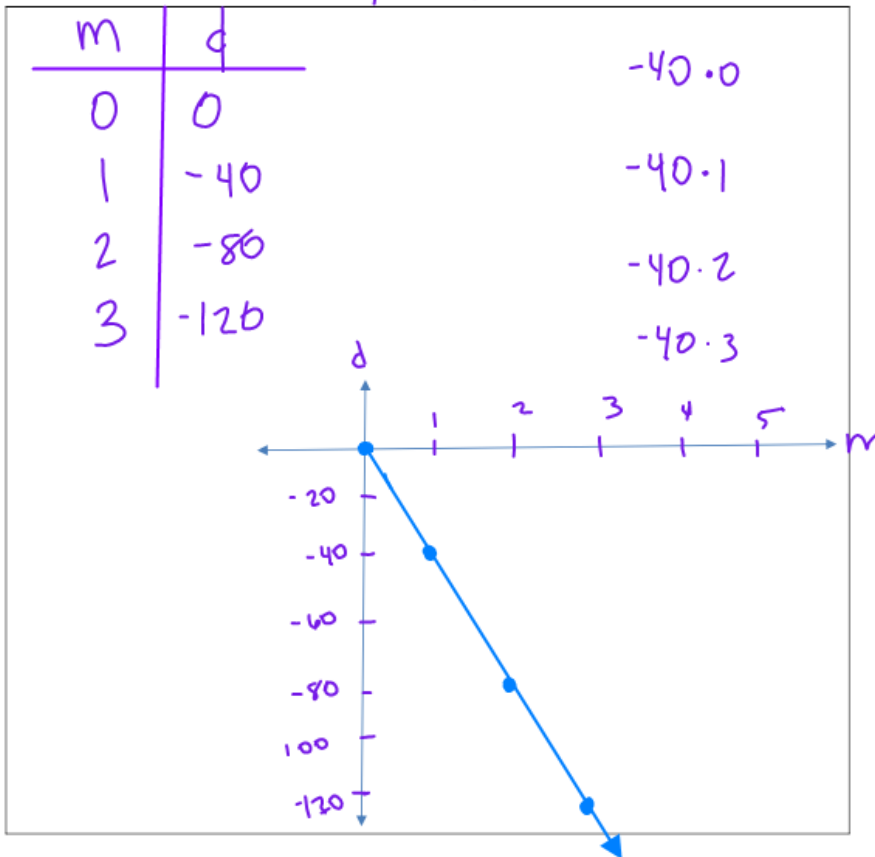


Lesson 2-5

Example 1: Using Equations to Generate Different Representations of Data

Make a table and sketch a graph of the path of a submersible diving at 40 ft. per minute. The depth of the submersible is represented by the equation $d = -40m$, where d is the depth and m is the number of minutes.

$$y = -40x$$

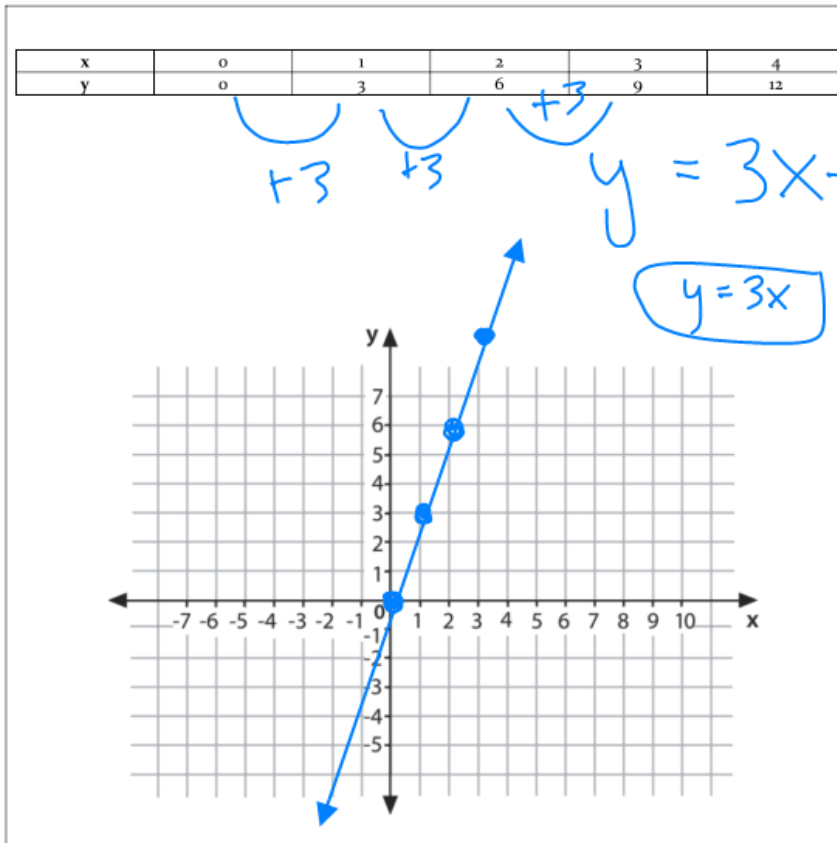


Example 2: Using Tables to Generate Different Representations of Data

①

②

Use the table to make a graph and to write an equation.



Example 3: Using Graphs to Generate Different Representations of Data

Use the graph to make a table and to write an equation. ^① ^②

x	y
-2	-1
-1	1
0	3
1	5
2	7

$$y = 2x + 3$$

